



Standard Gain Horn Antenna

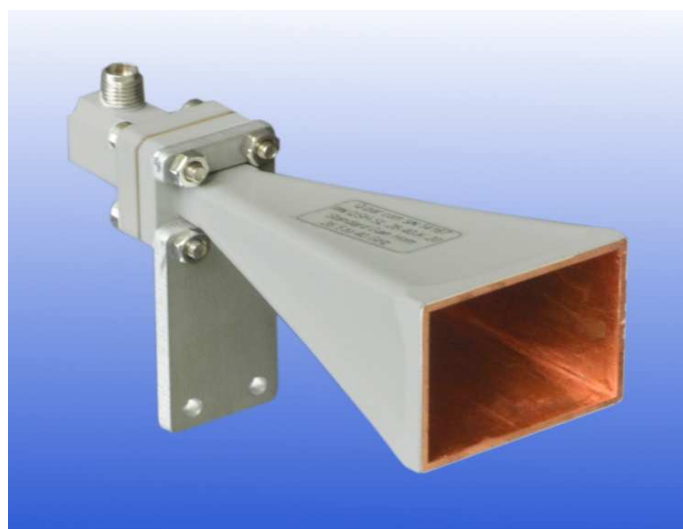
26.5 to 40 GHz

WG22 WR28 R320

Catalogue number: **QSH-SL-26.5-40-K-20**

Q-par reference: **QMS-00238**

Contents: **Typical Gain / Antenna Factor
Typical Beamwidth / Patterns
VSWR**



4TECT

ООО «4TECT»

Телефон: +7 (499) 685-4444

info@4test.ru

www.4test.ru

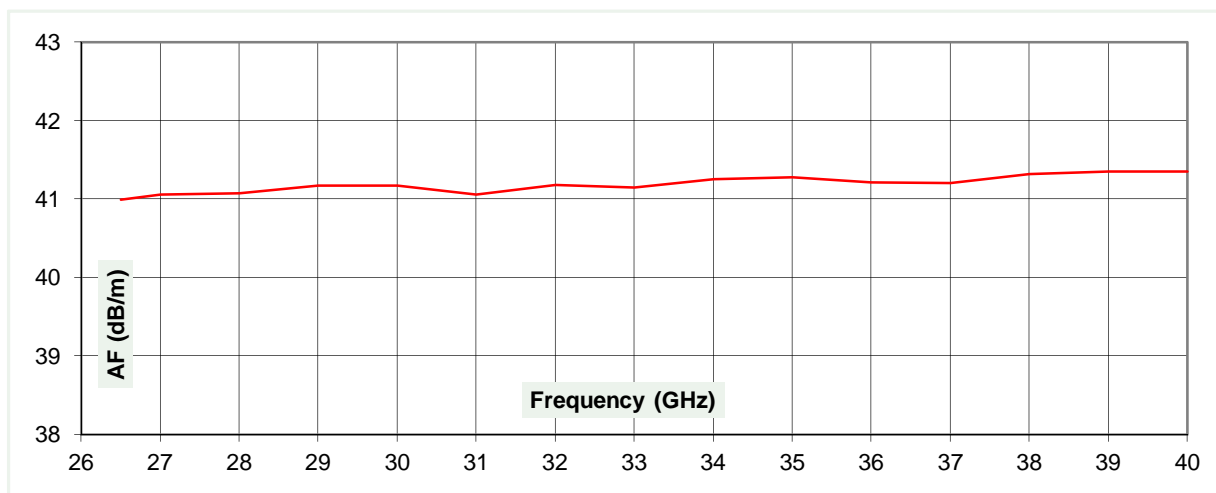
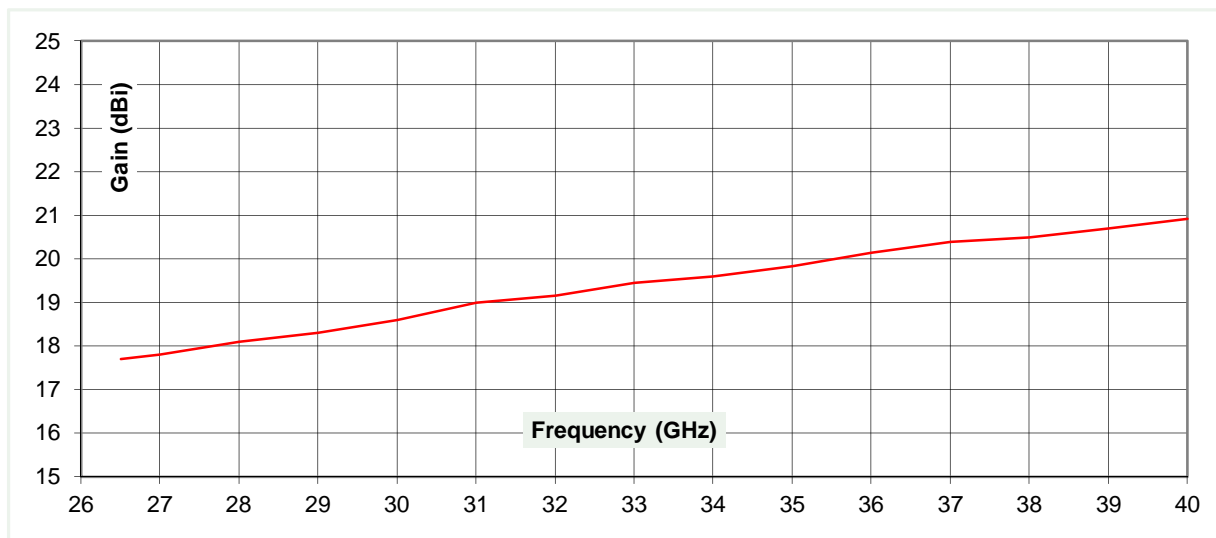
STEATITE
COMPUTING - POWER - COMMUNICATIONS
A Solid State Group Company

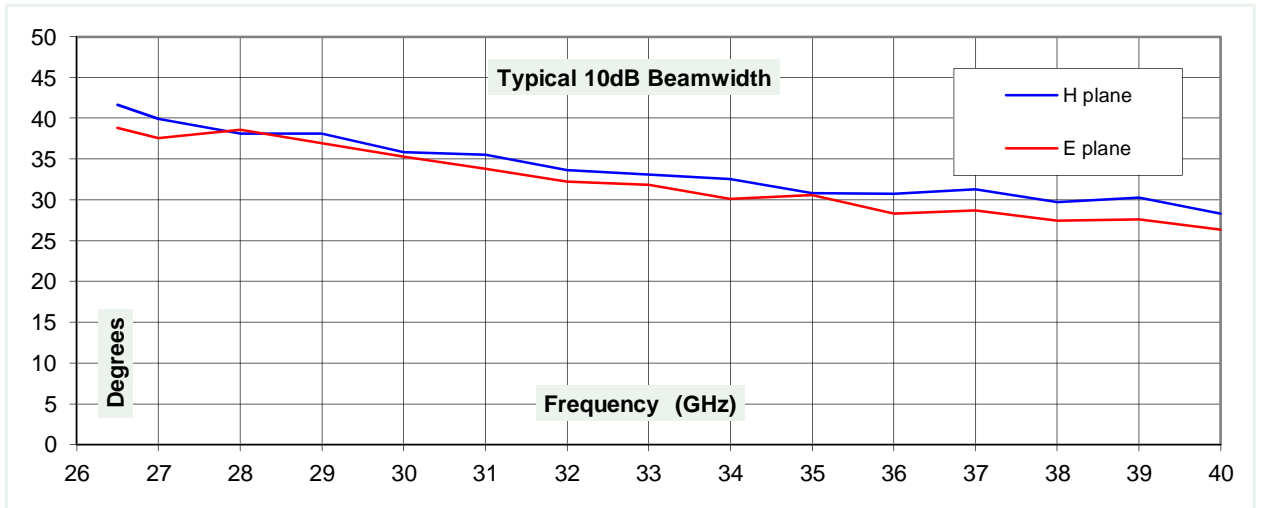
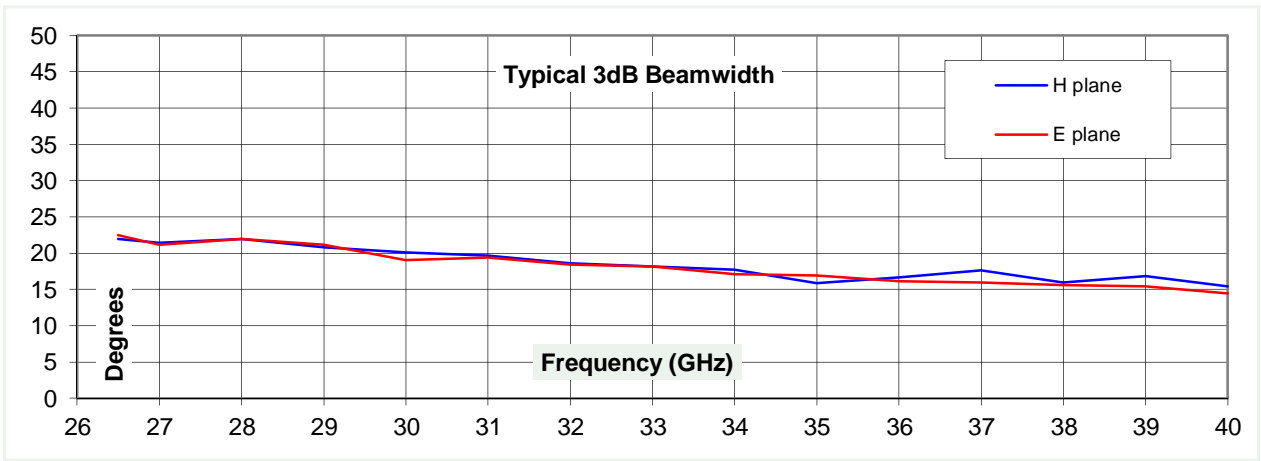
Typical Specification

Frequency	26.5 to 40 GHz
Connector type	K type jack
Power Handling	20 Watt c.w.
VSWR	Typically < 1.3:1
Gain	17.7 to 20.9 dBi
Antenna Factor	41 to 41.4 dB/m
3dB Beamwidth	14.5 to 22.5 degrees
10dB Beamwidth	26.3 to 41.7 degrees
Weight	146 g nominal
Size- max.	36 mm x 28 mm external aperture x 100 mm long
Mounting	Mounting bracket with 2 holes, diameter 3.1 mm, on 12 mm centres.
Construction	Electroformed copper with anodised aluminium mounting bracket.

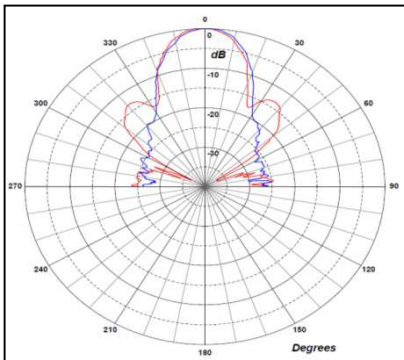
Typical Antenna Gain / Factor

This is calculated by reference to standard gain horn antennas, and cross checked with reference to the antenna beamwidth, with an estimated error of +/- 0.8dB.

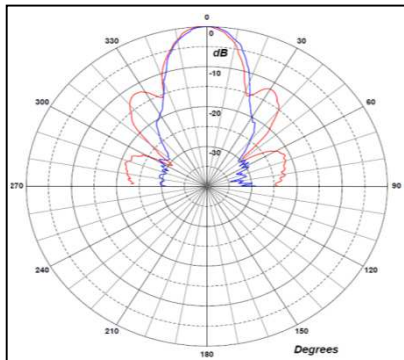




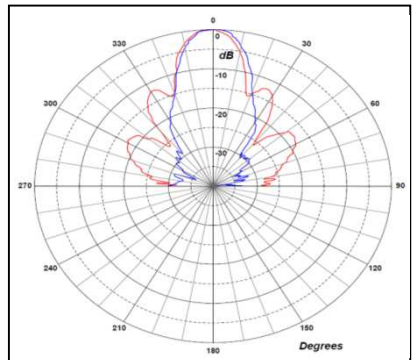
26.5 GHz



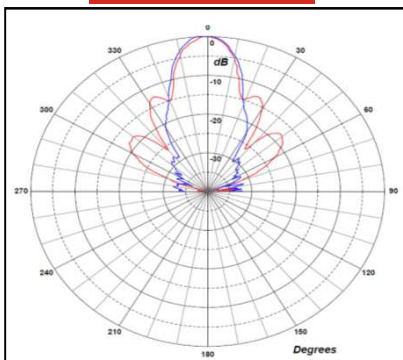
30 GHz



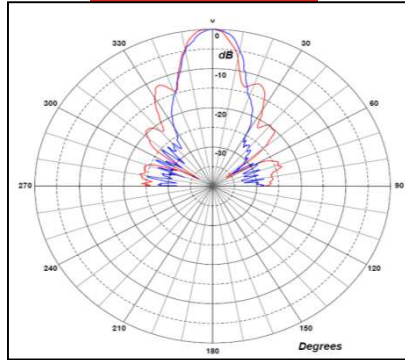
34 GHz



37 GHz



40 GHz



Red trace = E-plane, Blue trace = H-plane cut

