



Standard Gain Horn Antenna

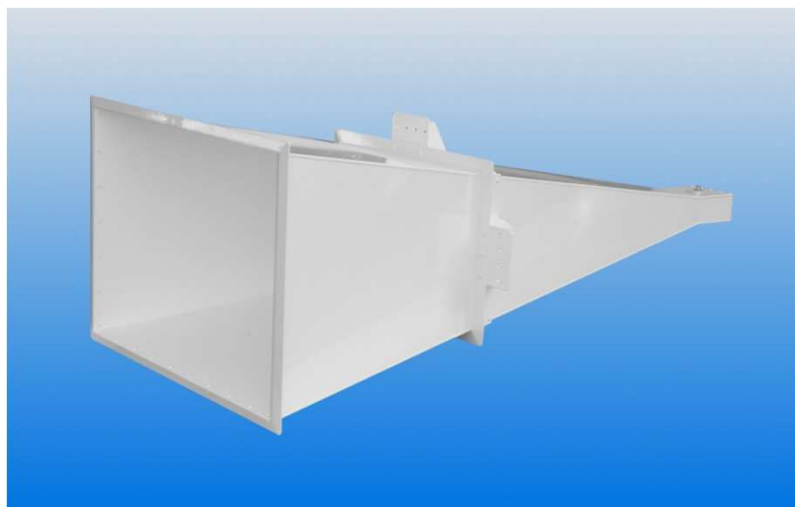
1.1 to 1.7 GHz

WG6 R14 WR650

Catalogue number: **QSH-SL-1.1-1.7-N-20**

Q-par reference: **QMS-00080**

Contents: **Summary**
Typical Antenna Gain / Factor
Typical Beamwidth
VSWR
Patterns



4TECT

ООО «4TECT»
Телефон: +7 (499) 685-4444
info@4test.ru
www.4test.ru

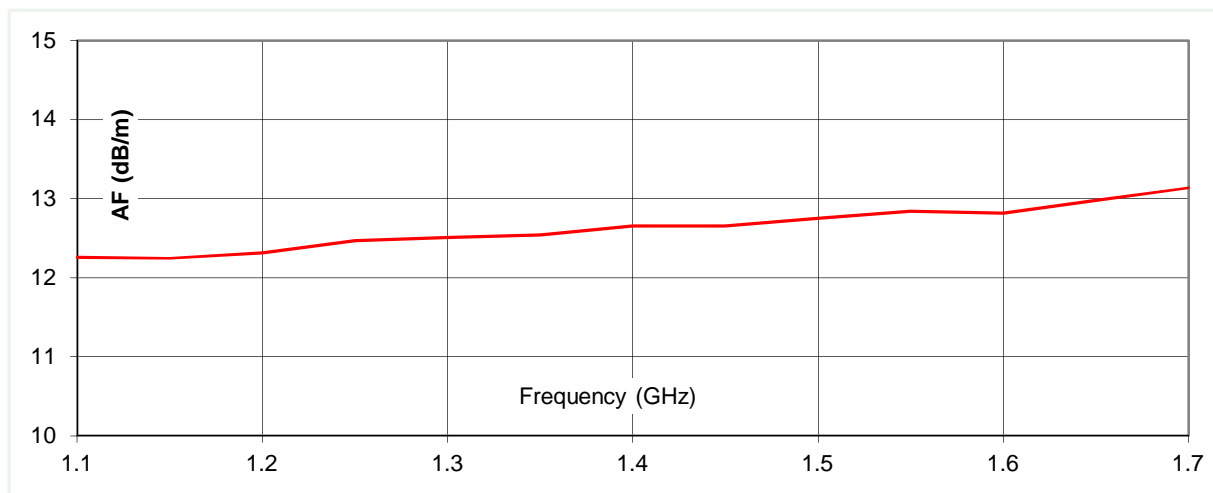
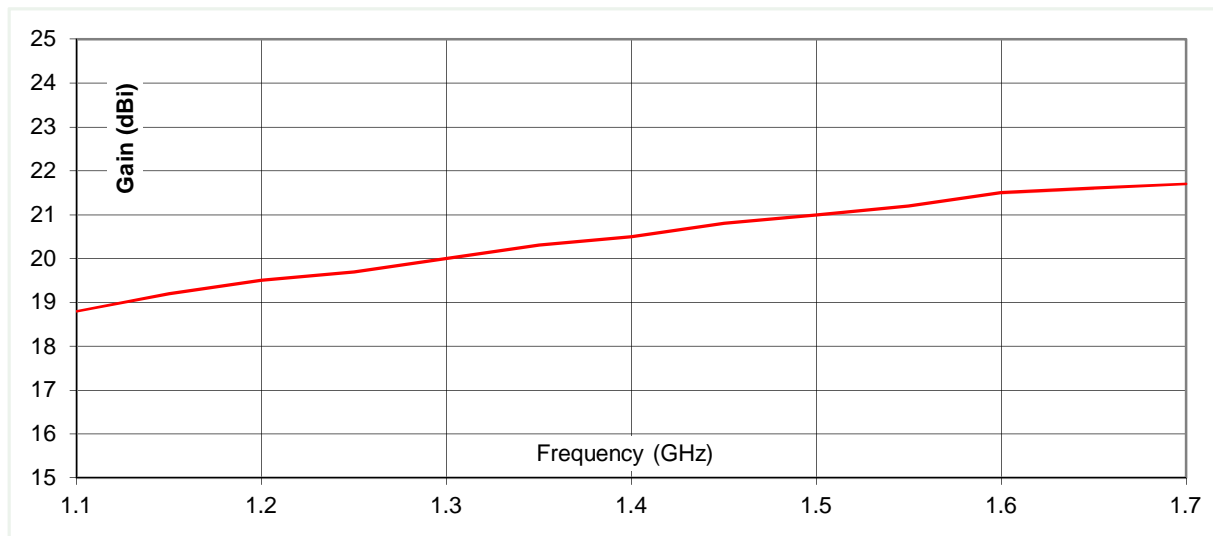
STEATITE
COMPUTING - POWER - COMMUNICATIONS
A Solid State Group Company

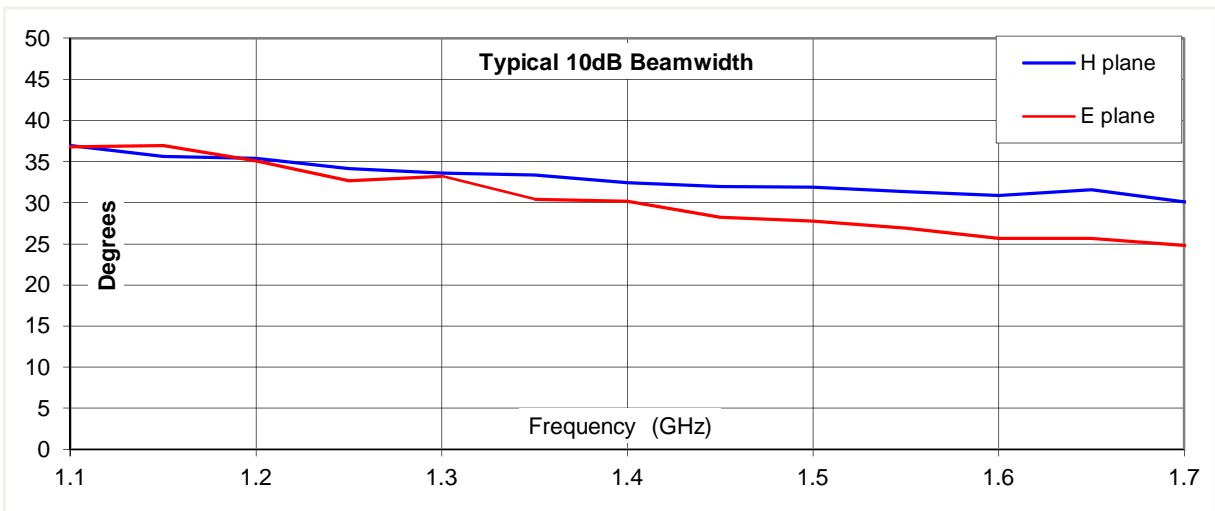
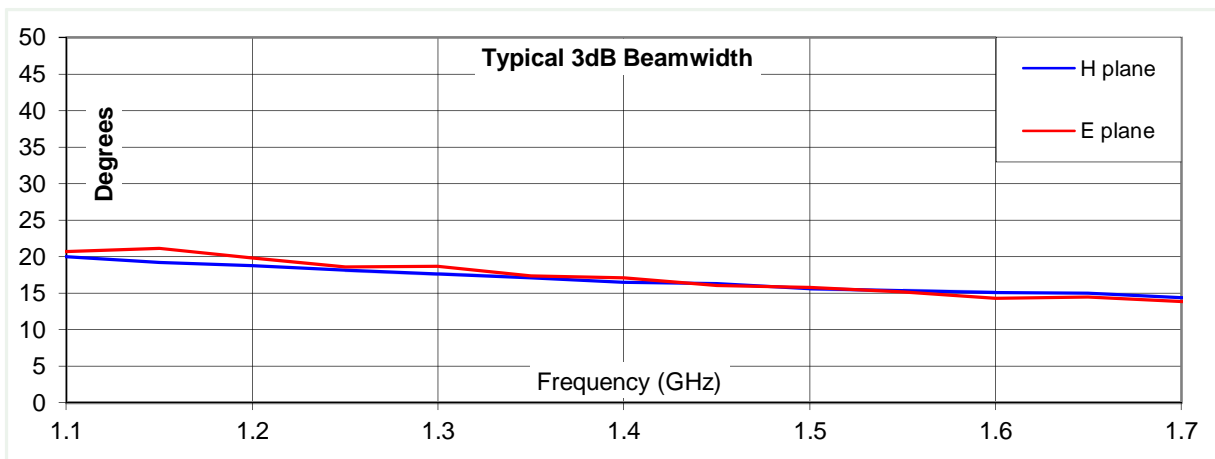
Typical Specification

Frequency	1.1 to 1.7 GHz
Connector type	N type jack
Power Handling	300 Watt c.w.
VSWR	Typically < 1.4 :1
Gain	18.8 to 21.7 dBi
Antenna Factor	12.3 to 13.1 dB/m
3dB Beamwidth	14 to 21 degrees
10dB Beamwidth	25 to 37 degrees
Weight	27 kg nominal
Size- max.	940 mm x 674 mm external aperture x 1800 mm long
Mounting	Mounting bracket on two sides, at C of G. Each having 4 holes, diameter 10 mm, 40 mm centres
Construction	Welded aluminium. Powdercoat finish.

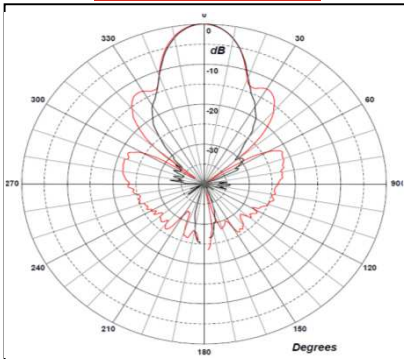
Typical Antenna Gain / Factor

This is calculated by reference to standard gain horn antennas, and cross checked with reference to the antenna beamwidth, with an estimated error of +/- 0.8dB.

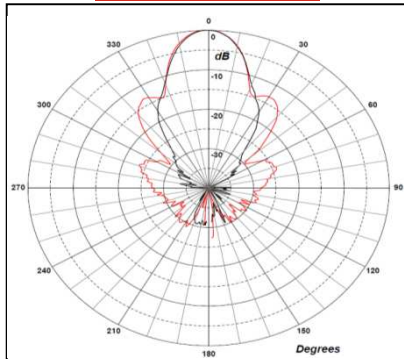




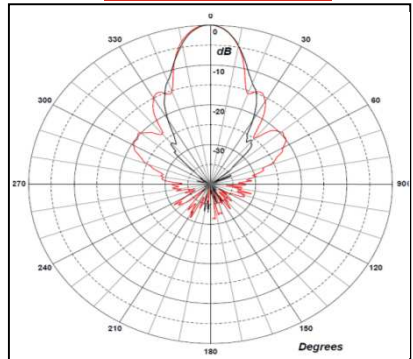
1.1 GHz



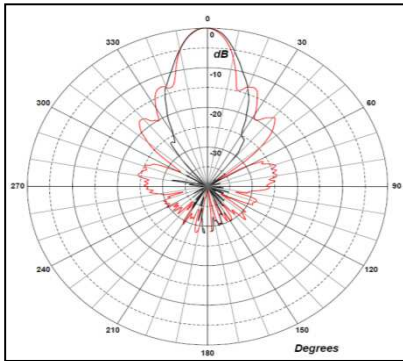
1.2 GHz



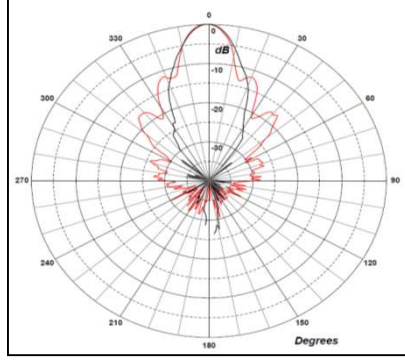
1.4 GHz



1.6 GHz



1.7 GHz



Red trace = E-plane cut, Black trace = H-plane cut

