



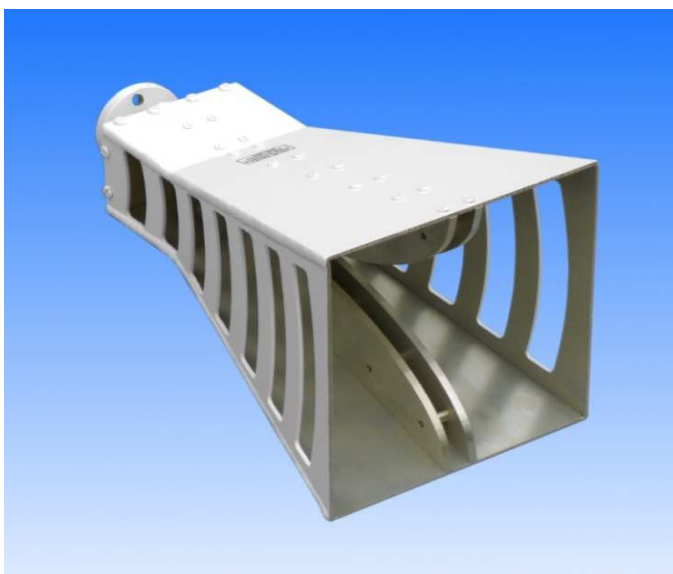
Wideband High-Power Horn Antenna

1 to 8 GHz

Catalogue number: **QWH-SL-1-8-B-SG**

Q-par reference: **QMS-00058**

Contents: **Summary**
Typical Gain / Antenna Factor
Typical Beamwidth / Patterns
VSWR



4TECT

ООО «4TECT»
Телефон: +7 (499) 685-4444
info@4test.ru
www.4test.ru

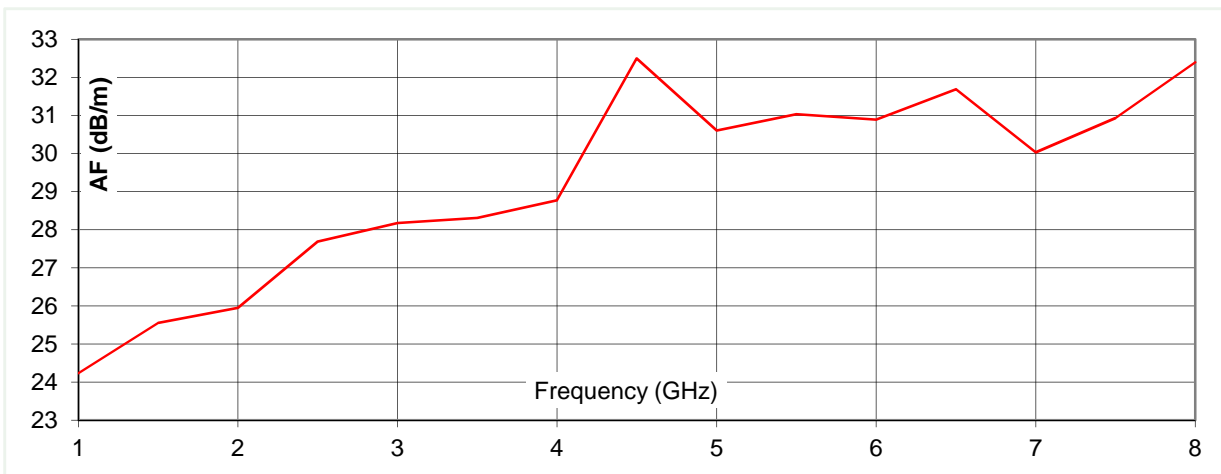
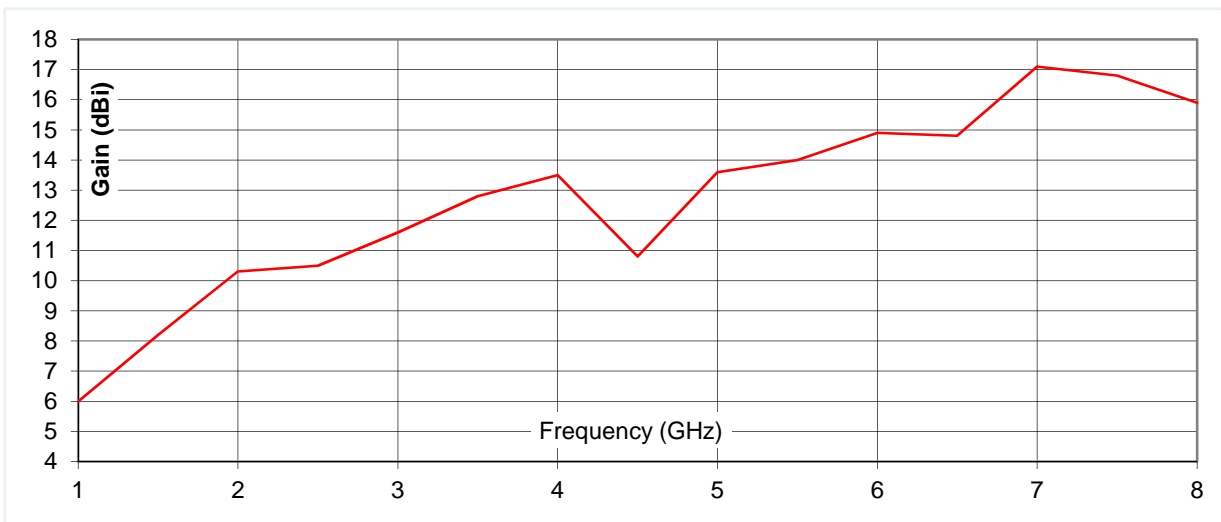
STEATITE
COMPUTING - POWER - COMMUNICATIONS
A Solid State Group Company

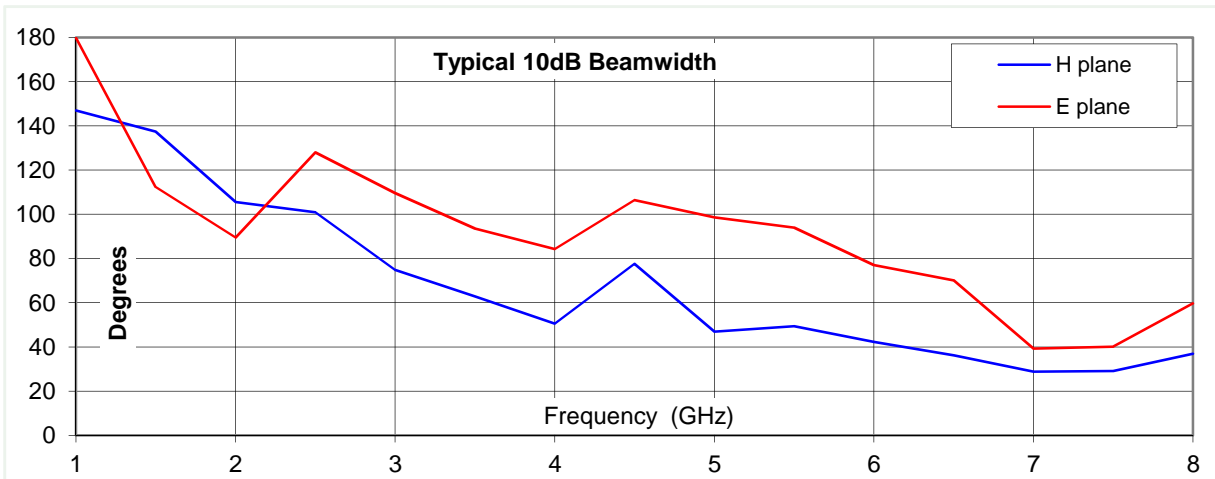
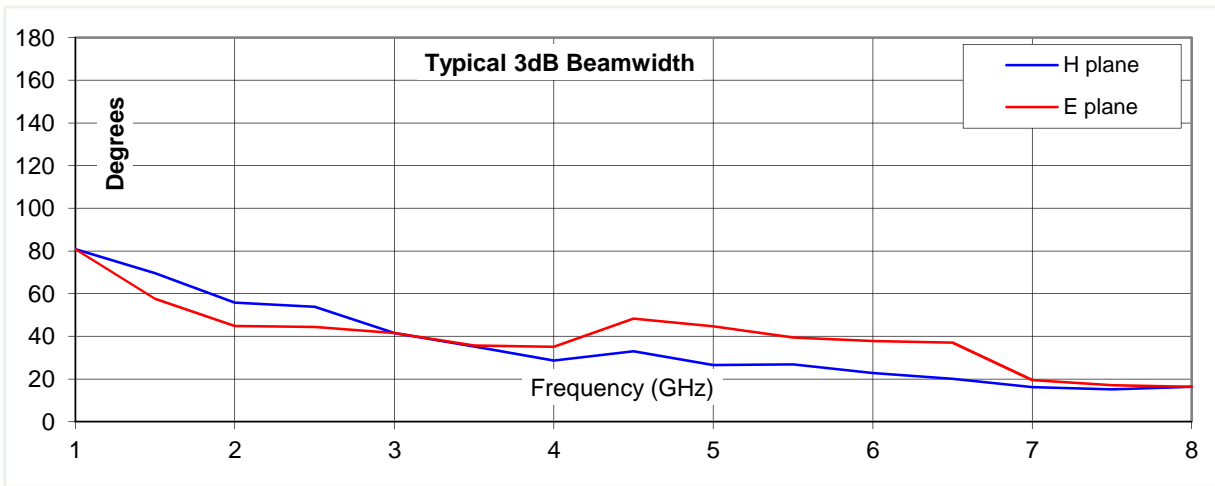
Typical Specification

Frequency	1 to 8 GHz
Connector type	7/8 IEC / EIA female
Power Handling	1.5 kW c.w.
VSWR	Typically < 1.4:1
Gain	6 to 17 dBi
Antenna Factor	24.2 to 32.5 dB/m
3dB Beamwidth	15 to 81 degrees
10dB Beamwidth	29 to 180 degrees
Weight	1.7 kg - nominal
Size- max.	186 x 184 mm aperture x 324 mm long
Mounting	via 7/8" connector flange
Construction	Aluminium

Typical Antenna Gain / Factor

This is calculated by reference to standard gain horn antennas, and cross checked with reference to the antenna beamwidth, with an estimated error of +/- 0.8dB.

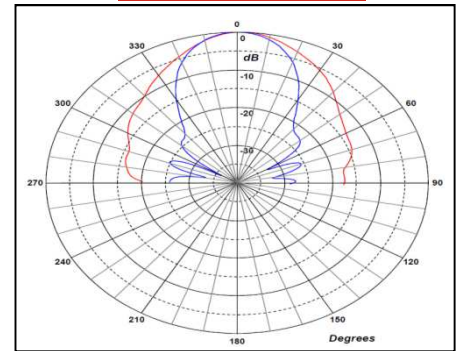
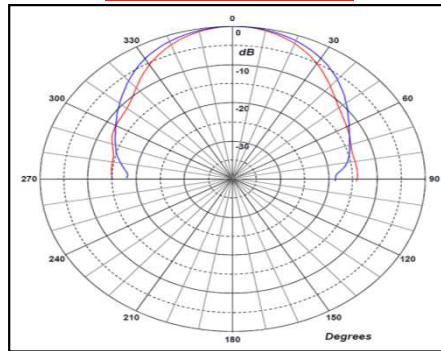
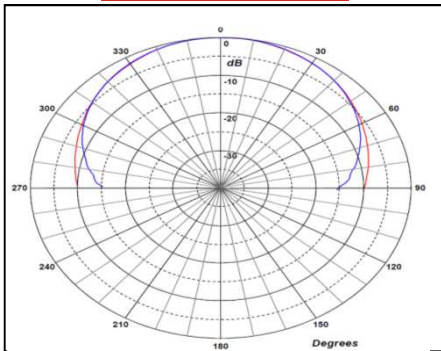




1 GHz

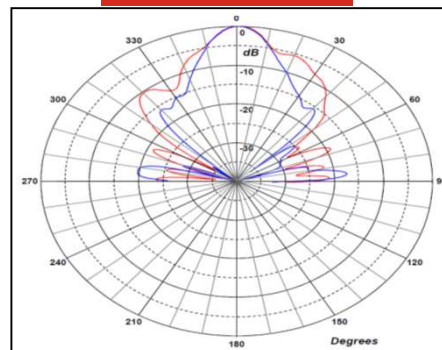
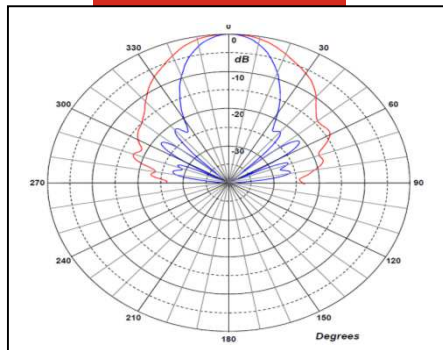
2 GHz

4 GHz



6 GHz

8 GHz



Red trace = E-plane, Blue trace = H-plane cut

