



Standard Gain Horn Antenna

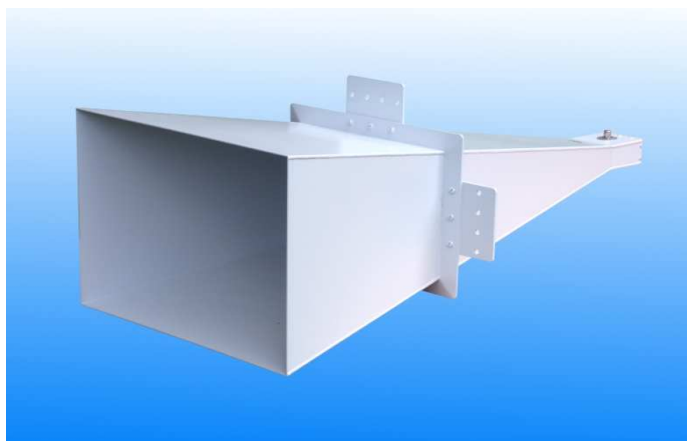
1.7 to 2.6 GHz

WG8 WR430

Catalogue number: **QSH-SL-1.7-2.6-A-20**

Q-par reference: **QMS-00342**

Contents: **Summary Antenna Gain
Beamwidth VSWR**

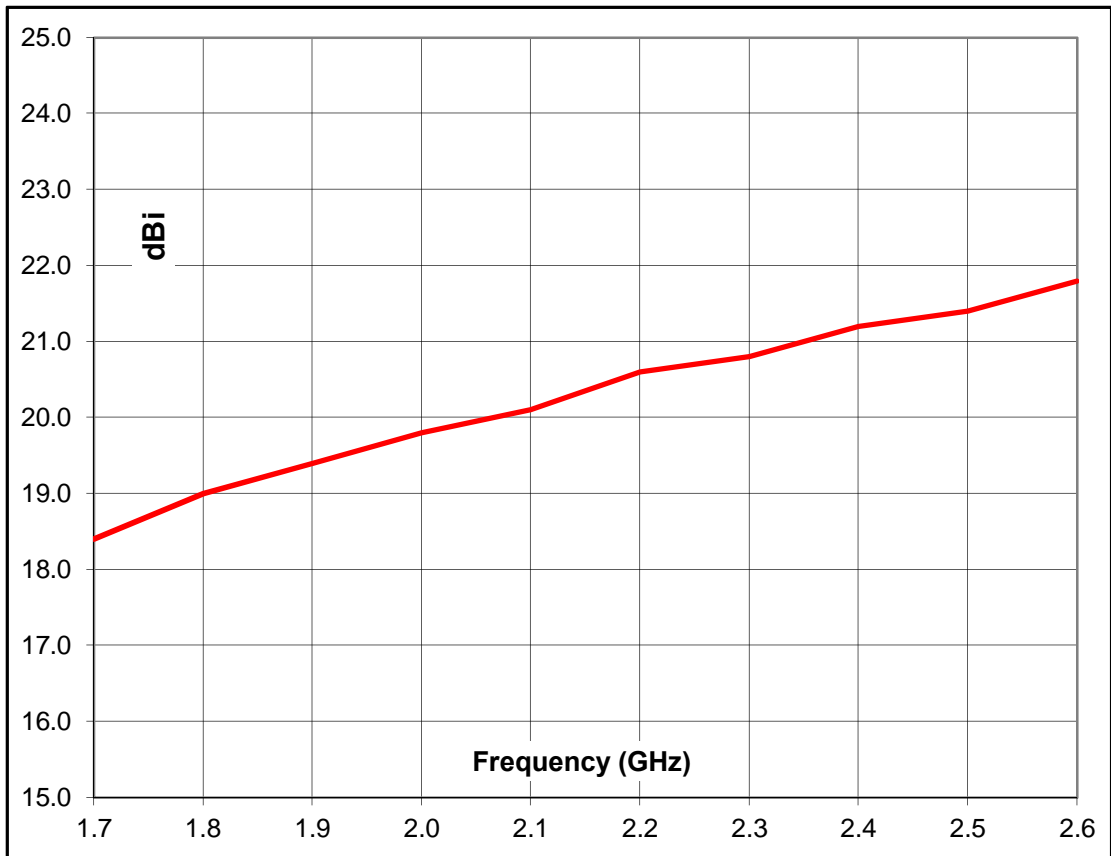


Summary

Frequency	1.7 to 2.6 GHz
Connector type	N type jack
VSWR	<1.3:1
Gain	18.4 to 21.8 dBi
Power handling	300 Watts c.w.
Weight	11kg - nominal
Size- max.	575 mm x 410 mm external aperture x 1200 mm long
Mounting	Mounting Plates fitted at C of G on 2 sides each with 4 holes, diameter 10 mm, 40 mm centres

Typical Antenna Gain

This is calculated by reference to standard gain horn antennas, and cross checked with reference to the antenna beamwidth, with an estimated error of +/- 0.8dB.



The recommended far field range for this antenna is > 5.6 Metres

Frequency	Gain	Antenna Factor
GHz	dBi	dB/m
1.7	18.4	16.4
2.0	19.8	16.5
2.2	20.6	16.5
2.4	21.2	16.6
2.6	21.8	16.7

